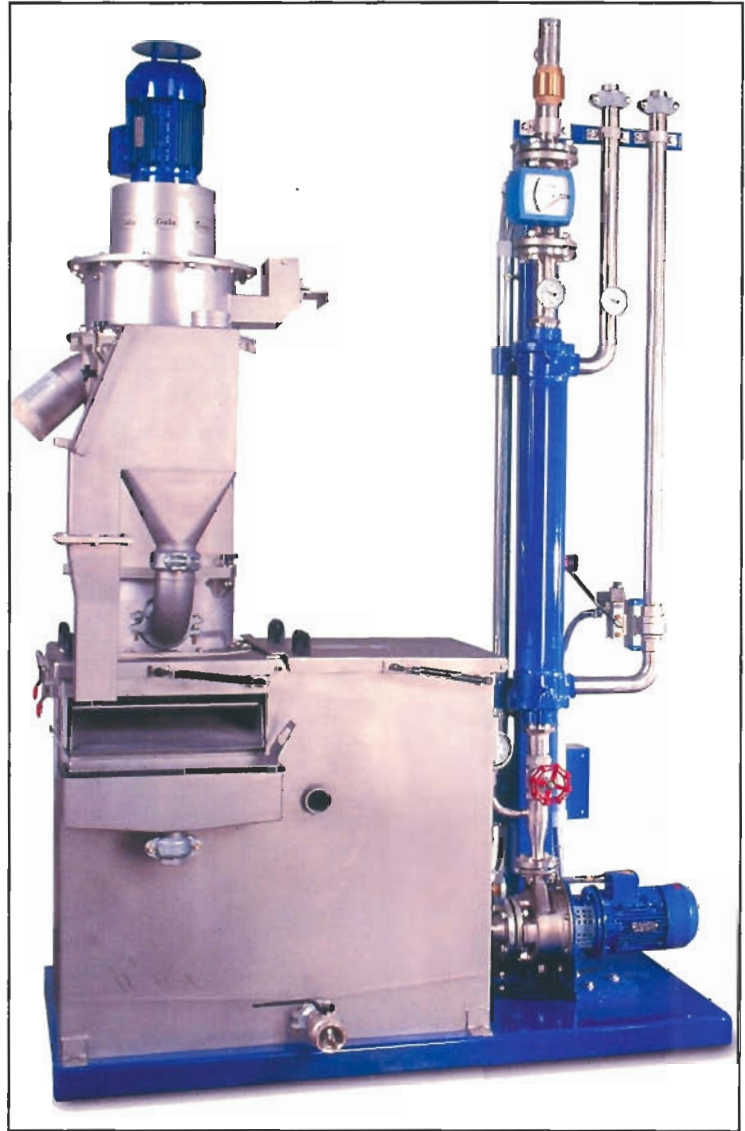


MB500™ Tempered Water System

The MB500™ Tempered Water System is a result of a cooperative effort between Gala and its Customers to develop a machine which directly addresses the need for the Custom Compounder to thoroughly clean the system between products. Small color masterbatch runs require frequent changeover. The MB500 targets this specific Customer need.

The design features a lightweight removable housing and screen to expose the rotor for cleaning. A sieve is built into the tank to keep the process water clean, and the sieve and waste tray are easily removed for cleaning.

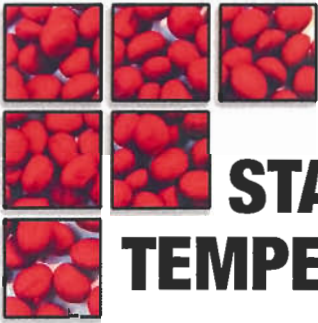
The MB500 Tempered Water System is designed for pellet rates up to 500 kg/h (1,000 lbs/hr).



ADVANTAGES

- Easy to clean
- Energy efficient
- Compact, less space required
- Low maintenance
- Low production costs
- Supported by 24-hour service worldwide!





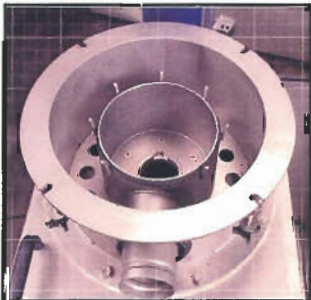
STANDARD FEATURES OF THE MB500™ TEMPERED WATER SYSTEM...

TEMPERED WATER SYSTEM

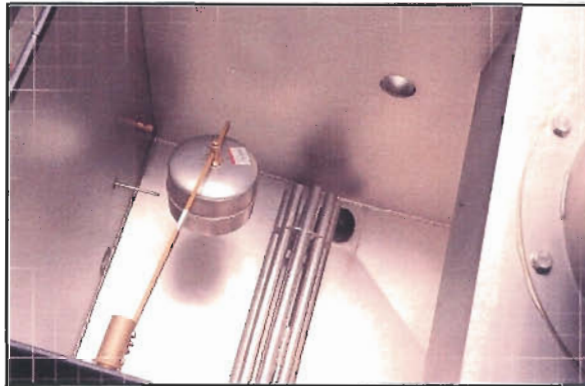


The dryer features a one-piece screen for easy cleaning.

A high efficiency fan is built into the dryer to provide a strong, adjustable countercurrent air flow for efficient pellet drying.



The dryer base section is bolted to one of the two tank lids for quick, easy cleaning and service by simply raising the lid.



The process water tank is easier and faster to clean because of the sloping V-shaped bottom and easy access.



An agglomerate catcher is included to remove oversized clumps of polymer before they enter the dryer. Agglomerates fall into the fines removal waste tray from the slurry inlet.



Access to the fines removal screen is made easy by an opening in the side of the water tank. A fines waste tray is included for collection and disposal of fines particles during process runs.

A fines removal tray is built into the water tank to catch solid particles from the process water draining back into the tank from the dryer.



Covered by all or more of U.S. Patent Nos. 4,728,276; 4,447,325; 4,621,996; 4,888,990; 4,896,435; 5,059,103; 5,403,176; 5,265,347; 5,624,688; 5,638,606; 6,138,375; 6,237,244B1; 6,332,765; 6,551,087B1; 6,739,457; 6,793,473; 6,807,748B2; and Patents Pending, as well as foreign patents and applications. Gala trademarks are registered under US Registration Nos. 2846928, 2333008, 2045090, 2034576, as well as foreign registrations and pending applications for registration.

Gala Industries, Inc.

181 Pauley Street, Eagle Rock, VA 24085 USA • Tel: 540 884 2589; Fax: 540 884 2310;
Email: gala@gala-industries.com • www.gala-industries.com



Gala Kunststoff -und Kautschukmaschinen GmbH
Bruchweg 28-30, 46509 Xanten, Germany • Tel: +49 (0) 2801 9800; Fax: +49 (0) 2801 98010
Email: info@gala-europe.de • www.gala-europe.de

